

Eyeglasses Inventory Program update from Version 6.1-6 to Version 6.3-3

List of changes



Kendall Optometry Ministry, Inc



M. Holland Kendall, III

7/17/2007

hollandkendall@peoplepc.com

Table of Contents

1.0	Introduction.....	3
2.0	Support the Burton Velo 2010 Autorefractor.	3
3.0	Add Spherical Equivalent to Prescription Printout.....	4
4.0	Share a common inventory from multiple laptops.....	5
5.0	Create a Vacancy and Deleted Inventory Report.....	6

1.0 Introduction

The purpose of this document is to list and explain the changes made to the Eyeglasses Inventory program in the process of upgrading it from version 6.1-6 to version 6.3-3. The following sections list and explain those changes.

2.0 Support the Burton Velo 2010 Autorefractor.

The Burton Velo 2010 must be cabled to the personal computer running the Eyeglasses Inventory Program. A cable appropriate for this purpose is part number 30010 from Kendall Optometry Ministry. The current cost of this cable is \$30.

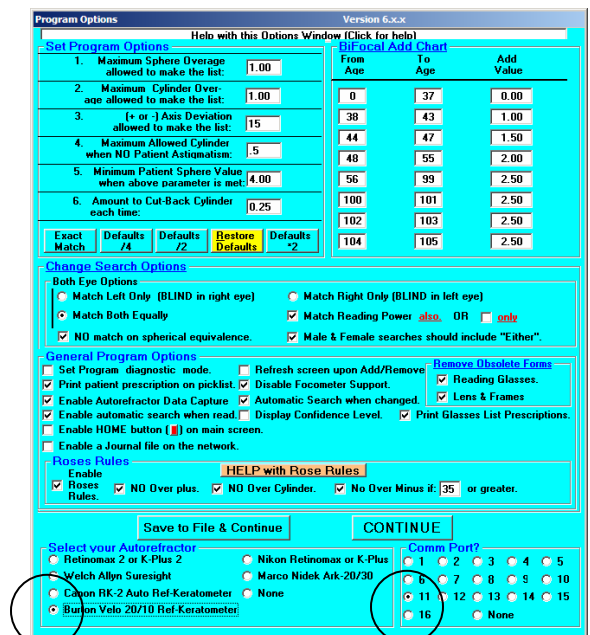
To the right is a picture of the right side of the instrument where the PC interface cable is connected. This is the "COM" connector. Below is a picture of the entire unit.



Connects to serial port of PC.

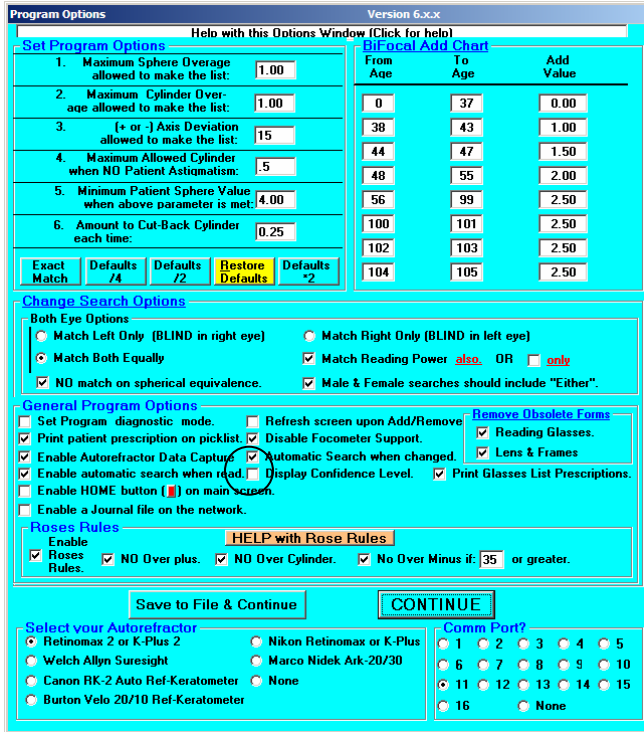
Detailed setup instructions for the autorefractor is provided in a separate document entitled **Burton Velo 2010 Setup Instructions**.

The eyeglasses inventory program setup involves clicking the option (circled) for the Burton autorefractor plus selection of the appropriate communications port (also circled).



3.0 Add Spherical Equivalent to Prescription Printout

If you unselect “Display Confidence Level” (circled) in the options window to the left below you will get a printout of the spherical equivalent when you print the patient’s prescription as shown to the right below. It is not a problem to no longer display the confidence level as most of the autorefractors this program supports do not transmit this information to the computer anyway.



Patient #: 112 Age: 40

Retinamax 2

EYE	SPH	CYL	AXIS	ADD	SE
R (OD) :	1.50	-0.75	±104	1.00	1.13
L (OS) :	2.25	-1.25	±88	1.00	1.63

Settings

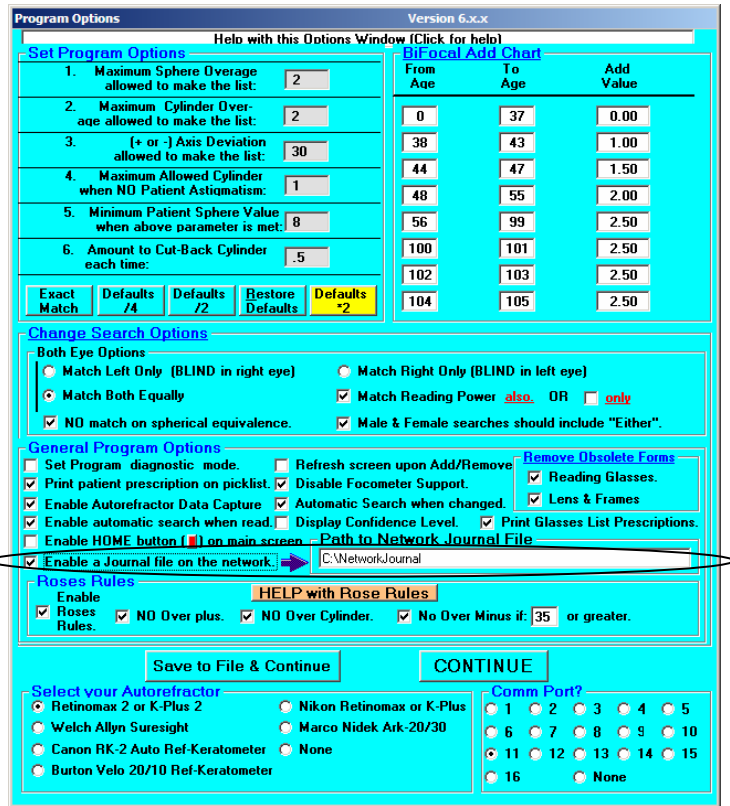
Matched Default*2 setting.
 ROSE RULE in effect for:
 NO Over Plus (+) sphere.
 NO over cylinder.
 NO over Minus (-) sphere. >35 Yrs.
 Matched ADD Power Also.

#	Lcn#	(#Rej)	Flags
2.3	1706		F-B
R(OD): 0.75/-0.25/90 Add:2.50 EQ:0.63			
L(OS): 1.00/-0.25/90 Add:2.50 EQ:0.88			
3.1	2181		F-B
R(OD): 0.75/-0.50/98 Add:2.25 EQ:0.50			
L(OS): 0.25/-0.25/65 Add:2.25 EQ:0.13			
3.5	1062		F-B
R(OD): 0.75/-0.50/88 Add:2.00 EQ:0.50			
L(OS): 0.50/-0.75/88 Add:2.00 EQ:0.13			
3.6	2253		F-B
R(OD): 0.75/-0.50/91 Add:2.25 EQ:0.50			
L(OS): 1.75/-1.25/69 Add:2.25 EQ:1.13			
6.0	2272		F-B
R(OD): 0.50/-0.75/125 Add:2.50 EQ:0.13			
L(OS): 0.25/-0.75/63 Add:2.50 EQ:-0.13			

4.0 Share a common inventory from multiple laptops.

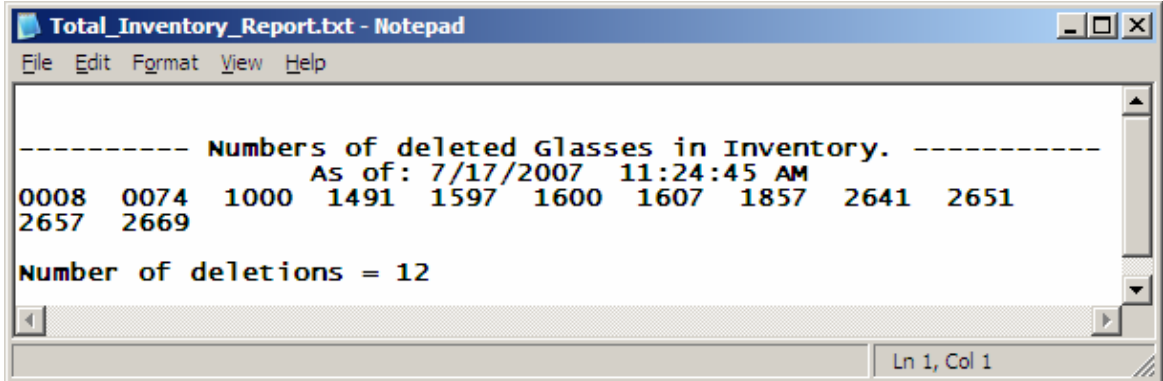
This feature allows you to have several laptops share and maintain a single eyeglasses inventory. This can be helpful if you have multiple autorefractors and you want to speed up the processing of your patients. You can also use it to place a laptop at the glasses inventory where the glasses are being fitted. This allows the fitters to immediately remove the pair of glasses from inventory without passing that responsibility over to the person operating the autorefractor.

A separate document describing this procedure has been written. This document is called **Running Multiple Glasses Inventory Systems on a Single Physical Inventory**. This is available upon request. The primary change to the setup of the Eyeglasses Inventory program is circled in the options window showing to the right.



5.0 Create a Vacancy and Deleted Inventory Report.

If you click on the **Report** dropdown you will see the **Deleted Item Report**. “Deleted Items” are pairs of glasses which have been removed from the inventory since the Eyeglasses Inventory program got its last inventory update. Below is a sample of that report:

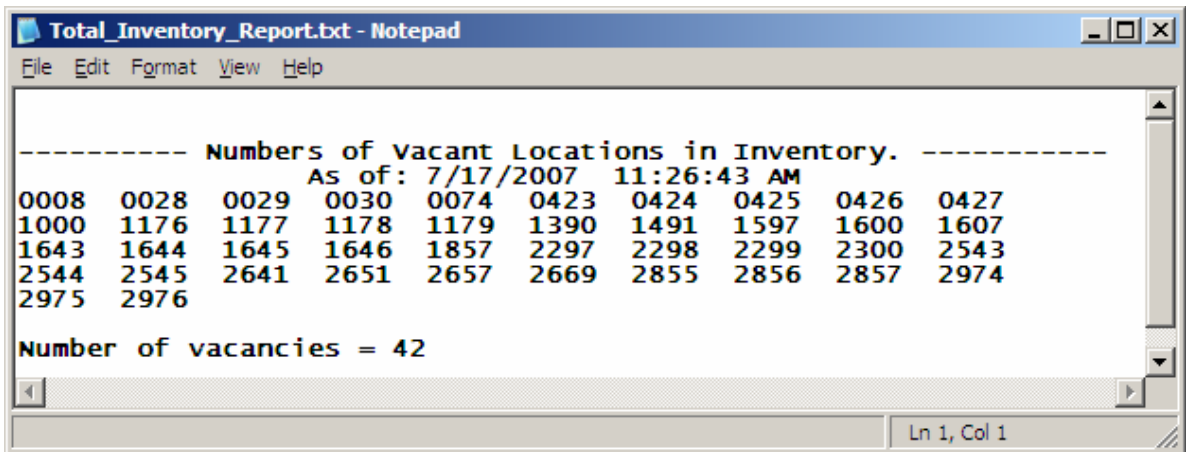


```

Total_Inventory_Report.txt - Notepad
File Edit Format View Help
----- Numbers of deleted Glasses in Inventory. -----
                As of: 7/17/2007 11:24:45 AM
0008  0074  1000  1491  1597  1600  1607  1857  2641  2651
2657  2669
Number of deletions = 12
Ln 1, Col 1

```

If again you click on the **Report** dropdown and then click on **Vacant Location Report (includes Deleted Items)** you will see the below report:



```

Total_Inventory_Report.txt - Notepad
File Edit Format View Help
----- Numbers of Vacant Locations in Inventory. -----
                As of: 7/17/2007 11:26:43 AM
0008  0028  0029  0030  0074  0423  0424  0425  0426  0427
1000  1176  1177  1178  1179  1390  1491  1597  1600  1607
1643  1644  1645  1646  1857  2297  2298  2299  2300  2543
2544  2545  2641  2651  2657  2669  2855  2856  2857  2974
2975  2976
Number of vacancies = 42
Ln 1, Col 1

```

“Vacancies” are defined as gaps in your inventory while “Deletions” are locations where glasses have been removed and dispensed to the patient. The above list includes the items which are shown as deleted in the report at the top of this page.

Since the Glasses Reader program is already aware of the original vacancies which it provided to the Glasses Inventory program, all that the Glasses Inventory program sends to it are the Deletions since the last update. After transferring the above Deletions, the vacancy list in both programs should show the same list of locations.