

Glasses Reader Program update from Version 3.1-4 to Version 3.1-6

List of changes



Kendall Optometry Ministry, Inc



M. Holland Kendall, III

7/17/2007

hollandkendall@peoplepc.com

Table of Contents

1.0	Introduction.....	3
2.0	Create Vacancy List file.....	3
3.0	Allow Manual entry to include the PD field.....	4
4.0	Change Write Sorted Inventory button.....	5
5.0	Add a Clear Record button to Barcode window.....	5
6.0	Add support to measure individual lens.....	5
7.0	Miscellaneous Changes.....	6

1.0 Introduction

The purpose of this document is to list and explain the changes made to the Glasses Reader program in the process of upgrading it from version 3.1-4 to version 3.1-6. The following sections list and explain those changes.

2.0 Create Vacancy List file.

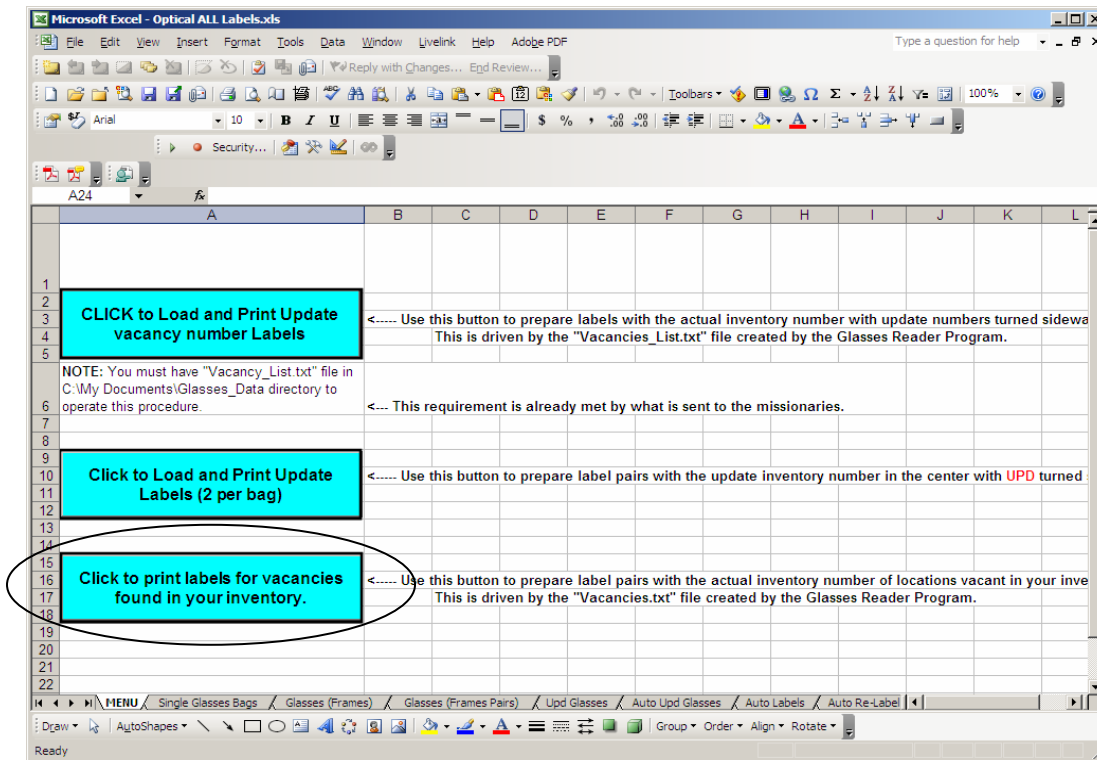
When you have vacancies in your inventory you will want to print labels for the new glasses that you plan to insert. Glasses Reader now has this feature. If you click:

File | Create Vacancy List File for Label Generation

A vacancy.txt file will be created in C:\My Documents\Glasses Data. To print the labels you must have Microsoft Excel installed and set to medium security. To initiate the printout load Avery 8167 (or equivalent) labels into your printer and click:

START | Programs | Glasses Reader | Print Update Labels with Excel

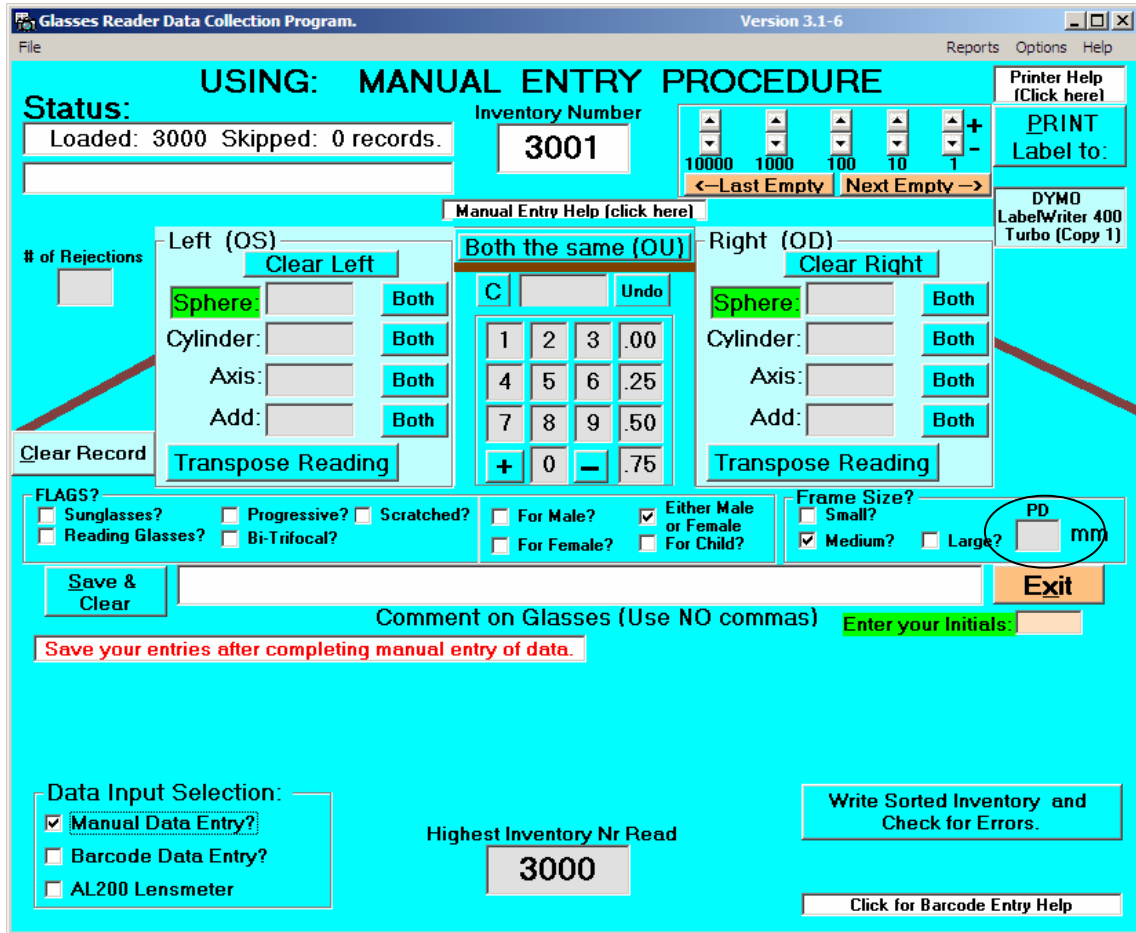
And you will see the following window:



The third button (circled) is clicked to initiate the printout.

3.0 Allow Manual entry to include the PD field.

When you are doing manual entry of eyeglasses where you know the PD (Pupillary Distance) you enter all other parameters of the glasses using the numeric keypad. With version 3.1-6 you can now enter the PD the same way as you enter other values on the manual entry field. (See below)



4.0 Change Write Sorted Inventory button.

The Write Sorted Inventory button has been changed from Write Sorted Inventory + Empty Journal Files & Check for errors to instead be as shown below to the right. This is because it no longer needs to write a journal file.

Write Sorted Inventory and Check for Errors.

5.0 Add a Clear Record button to Barcode window.

When you are barcoding in glasses, sometimes you will scan in the wrong number and want to clear it out without closing the barcode window. Now the barcode window has a CLEAR RECORD button as circled below:

Bar Code Reader Input.

BarCode Data:

Shrink Window Save HIDE **Clear Record** To Keyboard

Inventory Number: 10000 1000 100 10 1
 <--Last Empty Next Empty-->

FLAGS? (Change to modify barcode data)

Sunglasses? Progressive? For Male? Either Male or Female

Reading Glasses? Bi-Trifocal? For Female? For Child?

Scratched?

Frame Size? (Change to modify barcode data)

Small? Medium? Large? mm

6.0 Add support to measure individual lens.

Added support for the measurement of lens including printing of 2 small address labels which can be placed on the lens. Also add capability to barcode scan in these lens when a pair of glasses have been constructed.

Here are the setup steps for this feature:

Go into options (see graphic to the right) and select:

Print Labels for 2 uncut lens and
Print after Measurement= ON.

Do **Save to file and continue.**

Insert into the Dymo printer 30252 address labels. Be sure to setup the printer preferences to assume this label type or it will not print right. Put one lens in the lensmeter and rotate it until the axis is zero. Use the clamp to hold the lens in place. Now scoot it until you get a reading. Pull down the lever so you get the 3 ink spots on the lens. Now take this lens out and save it. It will be labeled XX-R where XX is a sequential number. Next place another lens in the meter and again rotate it until the axis is zero and move it into place until it reads.

Pull down the lever until you get the 3 red dots. Press the print button on the lensmeter and two labels will print. Put the XX-R label on the first lens and the XX-L lens on the

Set Data Collection Options. V3.0 x64

Help with options. (Click for Help)

Identify your Lensmeter

Reichert LensChek Humphrey LA350/360 Tomey TL-3000

Reichert AL200 Topcon CL-100 Nikon NL-2

Humphrey LA340 Tomey TL-900

Barcode Reader Keyboard input

Select COMM Port number

None 1 2 3 4 5 6 7 8 9 10 11 12

Path to collection files

C:\My Documents\Glasses_Data\ [Total_Inventory.txt]

OR -> No File Output or input Check to read file into memory at startup.

Printing Control

Choose Your Printer: [Dymo LabelWriter 400 Turbo (Copy 1)]

Printing ON OFF

Choose Printout and Printer Form

Detailed text plus bar codes.

Brief large text plus bar codes.

Print labels for 2 uncut lens

Brief Large text only - No barcode

30252 Address Label

Print after Measurement ON OFF

Show Inventory # on printout? YES NO

Other Options

Make ADDs Equal Add Minus "-" to cylinder

Force ADDs to be PLUS. Right first then left on screen.

Check enables automatic reading glasses detection. (NOT saved)

Default Axis for single Lens entry: 90 **NOT saved**

Allowed Maximums and Minimums

MAX Sphere	MAX Cylinder	MAX Add	MIN Add	Maximum Number of Locations
18	8	6	.75	3000

Historical Information

Previous Next Number: 3001 Last Used Update Number: 8

Save to File and continue UnProtect UnProtect

second lens. Put them aside and move to the next one.

There are also several changes to handle when the lens have been placed into a frame. Save the two bags and their labels. Set the printer to print standard barcode labels with OD and OS on the labels. Go into options and set your default axis (red circled item in the above) for any lens which have cylinder. Scan in the RIGHT eye lens first. Scan in the LEFT eye lens second. Now set male/female, etc and click PRINT LABEL and you will have a new barcode for the bag. You can then throw away the lens bags.

7.0 Miscellaneous Changes

Below are a list of miscellaneous changes to the program to resolve several bugs and to make the program easier to use.

1. Sometimes Initials do not appear on labels. Version 3.1-6 fixes this problem.
2. When barcoding in high numbers like 9.8 and 9.3 they do not convert to 9.75 and 9.25 as they should. Other numbers are likely the same problem. Version 3.1-6 fixes this problem.
3. Changed option "Check to read file into memory at startup" to be the default. This is changed almost every time anyway so being default was much better.
4. When transferring inventory to the Glasses Inventory program renamed the current journal file but does not create a new or create a blank journal file. Glasses Reader lets the Glasses Inventory program create this file instead. This means that the file will no longer contain the header record which prevents multiple of these journal files from being merged. This change was made to support the multiple PC feature of the Glasses Inventory Program.
5. In support of the network version of Glasses Inventory transfer a copy of the inventory file to the network share along with a BATCH file to transfer it to the local Glasses Reader space. Create an empty journal file in the network share also. Determine the location of the network share from the Glasses Inventory options file.
6. Removed "Left: May be minus..verify!" message and also "Right: May be minus..verify!" messages. These messages were put in originally to work with a very old and unpredictable lensmeter which is no longer available.